

Vampires vs. Werewolves - Suspects





Vampires vs. Werewolves - Suspects



The Vampires

Pike

The heart breaker of the coven, Pike uses his charms to lure victims in and gain their trust. Despite his devilish grin, he is desperately devoted to his immortal partner, Sophie.

CHARACTER COMPLEXITY RATING: 5



Sophie

Like her immortal partner Pike, Sophie is stunningly beautiful and incredibly charming. No man can resist her beauty, which makes her incredibly dangerous – a grinning spider perched in her immaculately woven web.

CHARACTER COMPLEXITY RATING: 4





Vampires vs. Werewolves - Suspects



Giselle

Giselle is a recent addition to the coven. Having just been changed in the 1970's, Giselle was a flower-power child. Adverse to war, disharmony and eating meat, it was only natural that in her "second life" as a vampire, Giselle is the coven's only "vegetarian".

CHARACTER COMPLEXITY RATING: 3



Cirrus

Cirrus is the leader of the coven, having just recently taken over after the death of Montrose – a mystery in itself. He is head strong and subdued, and always makes decisions based on the good of his coven as a whole.

CHARACTER COMPLEXITY RATING: 4





Vampires vs. Werewolves - Suspects



Camille

Camille is a coquette kitten to the max. Originally from France, she still speaks with a heavy accent and loves to dress the part! Her words are peppered with French expressions like "Je ne sais quoi". She is mates with Cass, and the two met on a ship from France just after she was turned into a vampire.

CHARACTER COMPLEXITY RATING: 5



Cass

Cass likes extravagance – everything for him must be the biggest and the best. While the others in the coven play down their wealth and immortality, Cass chooses a life of blatant opulence. His mate is Camille, who he met on a boat from France over five decades ago.

CHARACTER COMPLEXITY RATING: 4





Vampires vs. Werewolves - Suspects



Rico

Originally from Cuba, Rico joined the coven after wandering solo for 125 years. Despite his age and the various places he has lived, Rico has retained his thick Cuban accent.

CHARACTER COMPLEXITY RATING: 3



Arnauld

Arnauld is a guest at the mansion, staying with the vampire coven as he passes through town. While no one knows who he is, the others are cautiously tolerant of his presence, as it's in the vampire code to extend hospitality to another vampire in need of shelter. While most of those in the coven are modern vampires, Arnauld is old-school, dressing as though he is still living in the Victorian era. He's proper, well-mannered and very well-spoken.

CHARACTER COMPLEXITY RATING: 5





Vampires vs. Werewolves - Suspects



Elena

Elena is a member of the upper echelon of vampires, and lives in Romania as vampire royalty. When the royal family heard of the meeting between the vampires and the werewolves and that the werewolves were sending one of their "elders", they too insisted on sending a representative to ensure the safety of their kind. Elena has a classic, timeless style and is soft-spoken, but just her presence is enough to intimidate many vampires, let alone their enemies!

CHARACTER COMPLEXITY RATING: 3





Vampires vs. Werewolves - Suspects



The Werewolves

Monroe

The head of the pack, Monroe is older than he seems and is very protective of his "family". He has lived in these parts for over 100 years, and he will continue to exist as long as vampires roam the earth – or until he is killed by them, whichever comes first.

CHARACTER COMPLEXITY RATING: 3



Flora

Flora is the newest addition to the pack, and is just the same in her wolf form as she is when human – shy and introverted. She is never the first one to take the offensive, but when she is backed into a corner, her bite is definitely worse than her bark.

CHARACTER COMPLEXITY RATING: 4





Vampires vs. Werewolves - Suspects



Kenneth

In his human form, Kenneth is laid back and relaxed, but as a lichen he is one of the fiercest beasts in the pack. He came to the pack as a baby after his parents were killed by a coven of vampires, so he has a natural hatred for anything with fangs.

CHARACTER COMPLEXITY RATING: 5



Jacqueline

Jacqueline was the first of the female lichen in the pack. Her transformation was a shock to everyone – there had never been a female wolf before her! Having to prove herself to her male brethren has left her short-tempered and sassy, and she always has the perfect comeback in any situation.

CHARACTER COMPLEXITY RATING: 3





Vampires vs. Werewolves - Suspects



Metta

Metta is a newer addition to the pack, having only recently arrived in the area. She has been wandering alone since 2001, when her entire pack was wiped out in the vampire-lichen war. The rest of the wolves have accepted her as one of their own, and have given her a home, camaraderie and a chance to make peace with the "demons" of her past.

CHARACTER COMPLEXITY RATING: 5



Joshua

Joshua is a relatively new member to the pack, having only undergone his transformation three years ago. He is compulsive, strong-willed and quick tempered. Add some claws and a full moon and you have a recipe for danger!

CHARACTER COMPLEXITY RATING: 4





Vampires vs. Werewolves - Suspects



Timothea

Timothea, or "Tim" as she is referred to by the rest of the pack, was the second female addition to the wolf pack. Her transformation also confirmed that Jacqueline wasn't "The Chosen One", as many rumours suggested, and proved that female wolves were the future. Tim is a born problem solver and often relies on her quick wit to get the pack out of tough situations.

CHARACTER COMPLEXITY RATING: 3

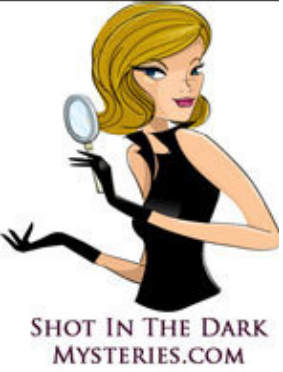


Ula

Ula is one of the werewolf elders who has come to the area for the meeting in order to protect the pack from their mortal enemies. Ula is suspicious by nature, and has never been in favour of a peace pact between vampires and werewolves, but she, and the rest of the elders, respect Monroe's decision. In spite of this, she is very guarded with the vampires, and has not a single nice word to say to anyone.

CHARACTER COMPLEXITY RATING: 3





Vampires vs. Werewolves - Suspects



Lyall

Lyall is the head of the bloodline of another wolf pack in another country – cousins of Monroe's pack. Lyall and Monroe are blood cousins themselves, and he, too, is very concerned about the hybrid in the area. He insisted on being present at the meeting between the vampires and werewolves to get to the bottom of who summoned the weapon, as much for the safety of his own pack as their cousins in Lichenshire.

CHARACTER COMPLEXITY RATING: 4

